



**SUSTAINABLE
BEST PRACTICES
GUIDE**
Wedoble

Brand Info

Wedoble is a Portuguese brand, created in 2003, specialized in baby and children's clothing. The knit is our enormous wealth, which we invest especially in technologically evolved clothing, with an extreme level of comfort, for newborn babies, up to 4 years old.

COLECTION
AW 22/23 – Magic Tales

AGE
Premature / 0-4

CONTACTS
Rua Amaro de Sousa, 408
4816-90 Caldas de Vizela,
Portugal
+351 253 480 200
info@wedoble.com

Brand Impact



Planet

ENVIRONMENTAL PRACTICES

56%
SOLAR ENERGY

21.12
L/KG OF MATERIAL PRODUCED

N/A
CO²

1500
KG OF WASTE



People

SOCIAL PRACTICES

85
WORKERS

13
PROCESSES

N/A
TRANSPARENCY

2
SOCIAL PROJECTS



Product

ECOPRODUCT

75%
OF NATURAL FIBERS

3
CIRCULAR DESIGN STRATEGIES

1
CIRCULAR MODEL

3
WASTE STRATEGIES



Brand Info

What is the problem they want to solve?

Fighting textile waste

Reduce virgin raw material extraction

Sustainable Development Goals

7
ENERGIA LIMPA
E ACESSÍVEL



SDG 7

Renewable energy

Ensure access to affordable, reliable, sustainable and modern energy for all

8
TRABALHO DECENTE
E CRESCIMENTO
ECONÔMICO



SDG 8

Decent work and economic growth

Promote sustained, inclusive and sustainable economic growth, full and productive employment and decent work for all

12
CONSUMO E
PRODUÇÃO
RESPONSÁVEIS



SDG 12

Production and consumption sustainable

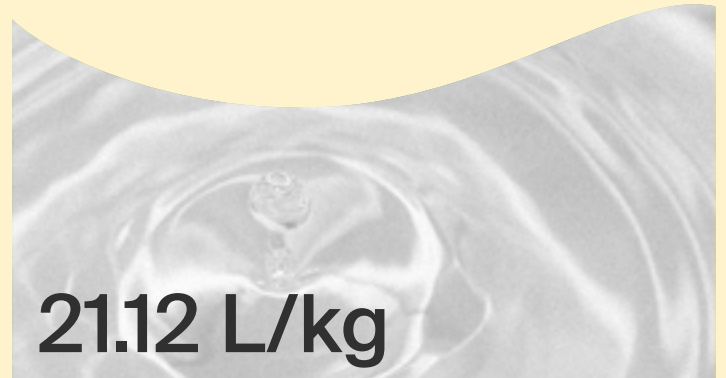
Ensure sustainable consumption and production patterns



Planet

How many liters of water were used?

of material produced

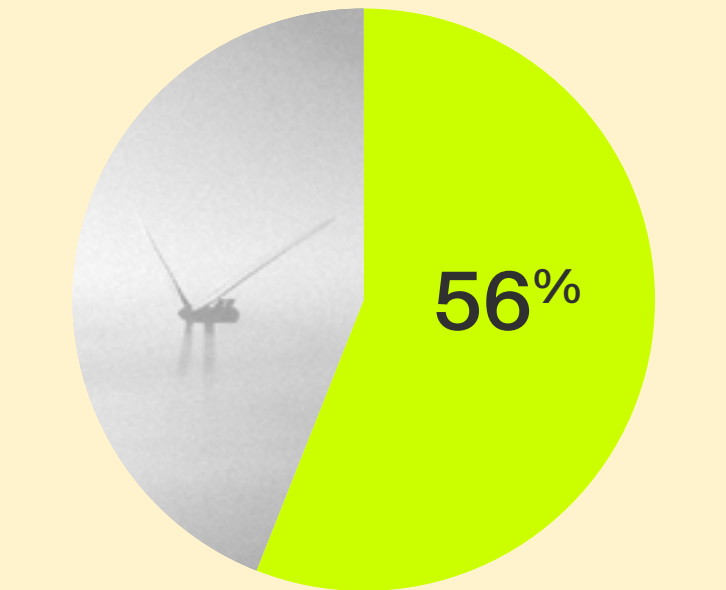


Do you use clean energy sources?
Which?

Solar panels

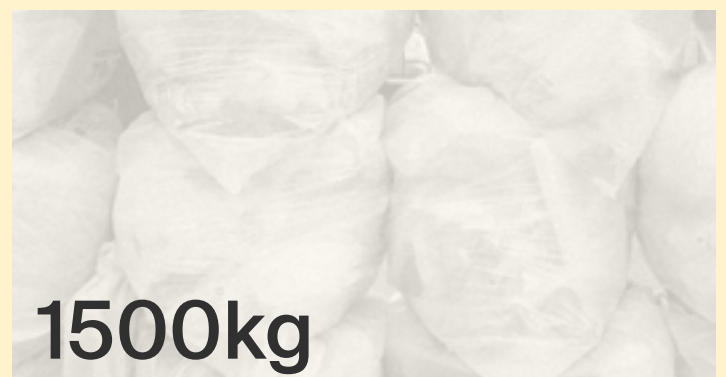
Leds

Car charger



How many kg of waste were generated?

Kg of Waste

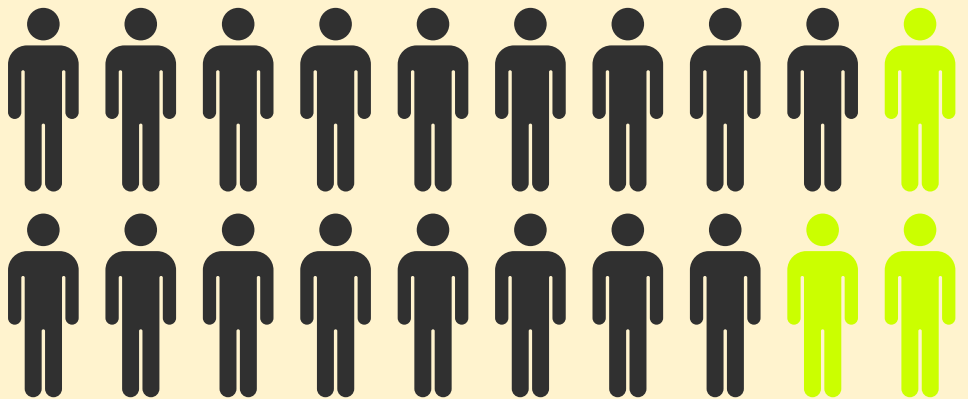




People

How many people are involved?

85



How many estimated processes?

13

Design

Modeling

Technical drawing

Knitting

Laundry

Cut

Production

Inspection

Finishing

Quality Control

Packaging

Shipping

What social projects are you involved in?

2

Casa da Criança
Guimarães

Liga Portuguesa
Contra o Cancro

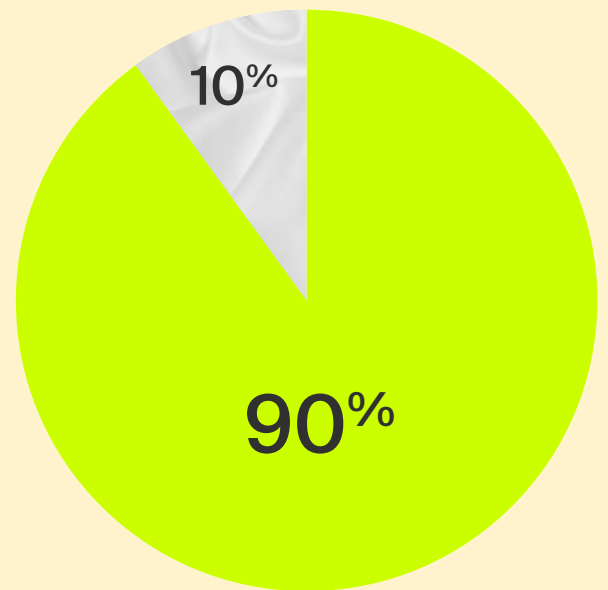


Product

What materials do you use? In what percentage?

Collection AW23/24

- 90% Natural fibers (plant and animal origin)
- 10% Synthetic fibers



Main Raw Material?



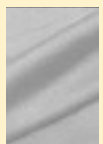
100%

Merino Wool



40%

Merino Wool



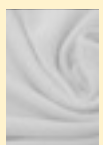
100%

Cashmere



30%

Viscose



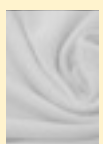
100%

Cotton



20%

Polyamida



90%+10%

Merino Wool + Cashmere



10%

Cashmere



Product

What circular design strategies do you use?

3

Design for Longevity

Design for unicycles

Design for to repair

What strategies do you use to fight waste?

3

Dead Stock use

CAD

WholeGarment 3D technology

Do you have a circular model?

Repair - repair service

Guarantees and Certifications

3

STANDARD 100 by OEKO-TEX

BCI - Better Cotton Initiative

Global Organic Textile Standard (GOTS)

